



Joanne L Crisp
Principal Property Practitioner
Registered with PPRA (FFC 202 322 001 2)
083 269 0881

joanne.crisp@propcoresa.co.za

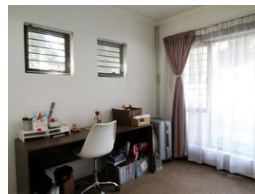
Contact Propcore Real Estate

010 0108719

Oak Avenue Office Park
376 Oak Avenue
Ferndale
Randburg
2194



Web Ref RL6977



R1,180,000

2 1

Monthly Bond Repayment R12,179.82
Calculated over 20 years at 11% with no deposit.

Transfer Costs R32,749.00 **Bond Costs** R25,220.00
These calculations are only a guide. Please ask your conveyancer for exact calculations.

Monthly Levy R1,966 **Monthly Rates** R477 **Sectional Title Levy** R34

Two bed garden apartment with view

Highly sought after corner apartment with spectacular view.

Discover your perfect home offering style and elegance in a sought after Lifestyle Estate.

Welcoming and warm living space that is full of natural light opening out onto a garden that extends its views to the natural eco-wetland unique to the estate - offering views of birdlife and wetland vegetation, including two glorious Weeping Willow trees.

The modern open plan kitchen is set with lots of well designed built in cupboards and finished to perfection with Caesar stone counter tops. Complete with its own appliances, which include a fridge, washing machine and a dish washer - for your convenience.

The bedrooms are both very spacious and offer each built in cupboards. The main bedroom has views over the garden.

Well appointed full bathroom,...

Features

Pets Allowed Yes

Interior	
Bedrooms	2
Bathrooms	1
Kitchens	1
Recep. Rooms	2
Furnished	No

Exterior	
Carports / Parkings	2
Security	Yes
Pool	Yes

Sizes	
Floor Size	69m ²

Extras

Built-in Kitchen Appliances Built-in Wardrobes Covered Parking Pets Allowed Private Garden Security Shared Pool Children's Play Area Barbecue Area Guard House Patio

