



Joanne L Crisp
Principal Property Practitioner
Registered with PPRA
(FFC 202 322 001 2)
083 269 0881

joanne.crisp@propcoresa.co.za

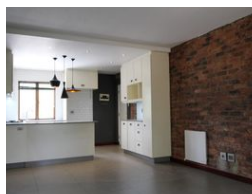
Contact Propcore Real Estate

010 0108719

Oak Avenue Office Park
376 Oak Avenue
Ferndale
Randburg
2194



Web Ref RL7293



R10,000 pm

Lease Period 12 months **Availability** Immediately **Deposit** R10,000

Annual Escalation -

Lease Excludes:
Electricity and water

2 1

Two bed one bath first floor apartment

Two bed one bath first floor apartment, Epsom Terrace, Vrede Avenue, Bryanston.
Available: immediate or 1 April 2025.

Unique first floor apartment with large balcony.

Modern open plan kitchen with space for two under counter appliances and a single door fridge.

Spacious living area that opens out onto a large covered balcony.

both bedrooms have laminate flooring, lots of built in cupboards. The main bedroom opens out onto the balcony.

The bathroom has the shower above the bath.

Covered carport and additional open parking.

Complex features: Epsom Terrace has 24 hours security, pool and play area. It is located down the road from Epsom Down shopping center with easy access to the highway.

Features

Interior

Bedrooms	2
Bathrooms	1
Kitchens	1
Recep. Rooms	1
Furnished	No

Exterior

Carports / Parkings	1
Security	Yes
Pool	Yes

